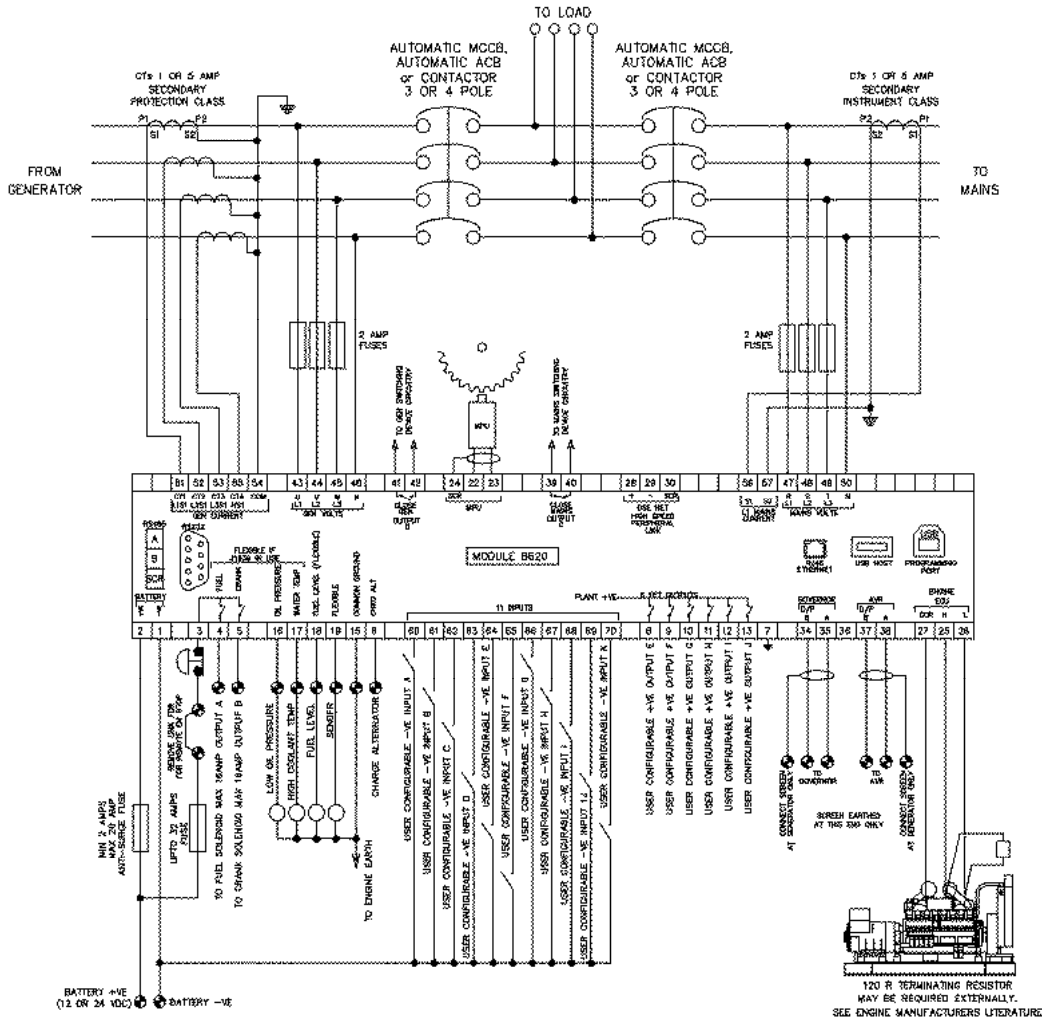


TYPICAL WIRING DIAGRAM

A larger diagram is available in the operators manual.



DIMENSIONS AND MOUNTING

For flat surface mounting in a Type 1 enclosure to meet UL requirements

DIMENSIONS

240.0mm x 181.1mm x 41.7mm (9.4" x 7.1" x 1.6")

PANEL CUTOUT:

220mm x 160mm (8.7" x 6.3")

Deep Sea Electronics Plc.

Tel: +44 (0)1723 890099
 Fax: +44 (0)1723 893303
 LO CALL (from UK BT landlines):
 Telephone 0845 260 8933
 Email: support@deepseapl.com
 Web: www.deepseapl.com

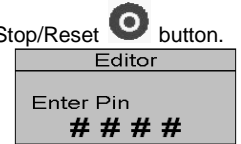
Deep Sea Electronics Inc.

Phone: +1 (815) 316-8706
 Fax: +1 (815) 316-8708
 TOLL FREE (USA only): Tel: 1 866 636 9703
 Email: dsesales@deepseausa.com
 Web: www.deepseausa.com



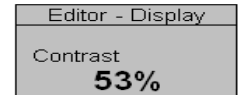
ACCESSING THE FRONT PANEL CONFIGURATION EDITOR.

- Ensure the engine is at rest and the module is in STOP mode by pressing the Stop/Reset button.
- Press the Stop/Reset and Info buttons simultaneously.
- If a module security PIN has been set, the PIN number request is then shown:



- Press the checkmark button the first digit will flash to enable the pin to be entered.
- Press (up) or (down) to adjust it to the correct value.
- Press (right) when the first digit is correctly entered. The digit you have just entered will now show '#' for security.
- Repeat this process for the other digits of the PIN number. You can press (left) if you need to move back to adjust one of the previous digits.
- When is pressed after editing the final PIN digit, the PIN is checked for validity. If the number is not correct, you must re-enter the PIN.

- If the PIN has been successfully entered (or the module PIN has not been enabled), the editor is displayed:



EDITING A PARAMETER

- Enter the editor as described above.
- Press the or to cycle to the section you wish to view/change. Then press or to cycle to the parameter within the section you have chosen.
- To edit the parameter, press to enter edit mode. The parameter begins to flash to indicate that you are editing the value.
- Press the up or down buttons to change the parameter to the required value.
- Press to save the value. The parameter ceases flashing to indicate that it has been saved.
- To exit the editor at any time, press and hold the or button.

- ▲ **NOTE: When the editor is visible, it is automatically exited after 5 minutes of inactivity to ensure security.**
- ▲ **NOTE: The PIN number is automatically reset when the editor is exited (manually or automatically) to ensure security.**
- ▲ **NOTE: More comprehensive module configuration is possible using the 86xx series PC configuration software. Please contact us for further details**
- ▲ **NOTE: The contents of the tables overleaf may differ depending on the actual module configuration.**

ADJUSTABLE PARAMETERS

Front Panel Configuration Editor

Section	Parameter as shown on display	Values	
Display	Contrast	53%	
	Language	English, others.	
Timers	Current Date and Time	hh:mm	
	LCD Page Timer	5m	
	Scroll Delay	2s	
	Engine Pre Heat Timer	0s	
	Engine Crank Duration	10s	
	Engine Crank Rest Time	10s	
	Engine Safety On Delay	10s	
	Engine Smoke Limiting	0s	
	Engine Smoke Limiting Off	0s	
	Engine Warm Up Time	0s	
	Engine Cool Down Time	1m	
	Engine Speed Overshoot Delay	0s	
	Engine Failed To Stop	30s	
	Battery Under Voltage warning Delay	1m	
	Battery Over Voltage warning Delay	1m	
	Return Delay	30s	
	Generator Transient Delay	0s	
	Mains Transient Delay	2s	
	Mains transfer time	0.7s	
	Mains	Mains Under Voltage Alarm	184V
		Mains Over Voltage Alarm	277V
		Mains Under Frequency Alarm	45Hz
		Mains Over Frequency Alarm	55Hz
Mains Transient Delay		2s	
CT Primary		600A	
CT Secondary		5A	
Mains kW Rating		345kw	
Mains kVar Rating		258kw	
Generator		Under Voltage Shutdown	184v
		Under Voltage Pre-Alarm	196v
	Nominal Voltage	230v	
	Over Voltage Pre-Alarm	265v	
	Over Voltage Shutdown	277v	
	Under Frequency Shutdown	40Hz	
	Under Frequency Pre-Alarm	42Hz	
	Nominal frequency	50Hz	
	Over Frequency Pre-Alarm	54Hz	
	Over Frequency Shutdown	57Hz	
	Full Load Rating	500A	
	kW Overload Trip	100%	
	Delayed Over current	Active	
	Delayed Over Current	100%	
	AC System	3 Phase 4 Wire	
	CT Primary	600A	
	CT Secondary	5A	
	Short Circuit Trip	200%	
	Earth CT Primary	500A	
	Earth Fault Trip	Active	
	Earth Fault Trip	10%	
	Transient Delay	0s	
	Gen Reverse Power Delay	2s	
	Full kW rating	345kw	
	Full kVAR rating	258kVAR	
	Load Ramp Rate	3%	
	Gen Reverse Power	35kw	
	Insufficient Capacity Delay	1s	
	Insufficient Capacity action	None	
	Reactive Load CTL mode	VAR fixed export	
	Load Parallel Power	50%	
	Load Power Factor	1.00pf 0 KVAR 0%	
	Engine	Oil Pressure Low shutdown	1.03bar
Oil Pressure Low Pre-Alarm		1.24bar	
Coolant Temp High Pre-Alarm		90°C	
Coolant Temp High Electrical Trip		92°C (when Enabled)	
Coolant Temp High Shutdown		95°C	
Start Delay Off load		5s	
Start Delay on load		5s	
Start Delay Telemetry		5s	
Pre Heat Timer		0s	
Crank Duration		10s	
Crank rest Time		10s	
Safety On Delay		10s	
Smoke Limiting		0s	
Smoke Limiting off		0s	
Warm up Time		0s	
Cool Down Time		1m	
Speed Overshoot Delay		0s	
Speed Overshoot		0%	
Fail To Stop Delay		30s	
Battery Under Volts warning		Active	
Battery Under Volts warning Delay	1m		

Continued overleaf

Front Panel Configuration Editor (continued)

Section	Parameter as shown on display	Values
Engine (Continued)	Battery Under Volts warning	10v
	Battery Over Volts warning	Active
	Battery Over Volts warning Delay	1m
	Battery Over Volts warning	30v
	Charge Alternator Failure warning	Active
	Charge Alternator Failure warning	6.0v
	Charge Alternator warning Delay	5s
	Charge Alternator Failure shutdown	Inactive
	Charge Alternator Failure shutdown	4.0v (When Enabled)
	Charge Alternator Failure shutdown	5s (When Enabled)
	Charge Alternator shutdown Delay	
	Droop %	Active, Inactive. Electronic engines only when droop is enabled.
	Scheduler	Scheduler
Schedule On Load		Active, Inactive (Only Available When Scheduler Is Active)
Schedule Period		Weekly, Monthly (Only Available When Scheduler Is Active)
Schedule Time & Date selection (1-16)		Press to begin editing then or when selecting the different parameters in the scheduler.

ACCESSING THE 'RUNNING' CONFIGURATION EDITOR

- The 'running' editor can be entered while the engine is running. All protections remain active if the engine is running while the running editor is entered.
- Press and hold the button to enter the running editor.

ADJUSTABLE PARAMETERS (Running editor)

- Enter the editor as described above.

- Press the up or down buttons to cycle to the section you wish to view/change.

- To Edit the parameter press the button to enter edit mode. The parameter begins to flash to indicate that you are editing the value.

- Press the up or down buttons to change the parameter to the required value.

- Press the button to save the value. The parameter ceases flashing to indicate that it has been saved.

- To exit the editor at any time, press and hold the button.

Running Editor

Section	Parameter as shown on display	Factory Settings
DISPLAY	Contrast	53%
	Language	English
	Load Power factor	0-100% (0)
	Load parallel power	0-100% (50)
	Commissioning screens	Inactive, Active
	Override starting alarms	Inactive, Active
	Voltage adjust (manual mode only engine running breaker open)	0-100 % (0)
	Frequency adjust (manual mode only engine running breaker open)	0-100 % (0)
	Auxiliary Mains Fail out of sync reset	Inactive Active
	Mains decoupling test mode (Stop mode only)	Inactive Active