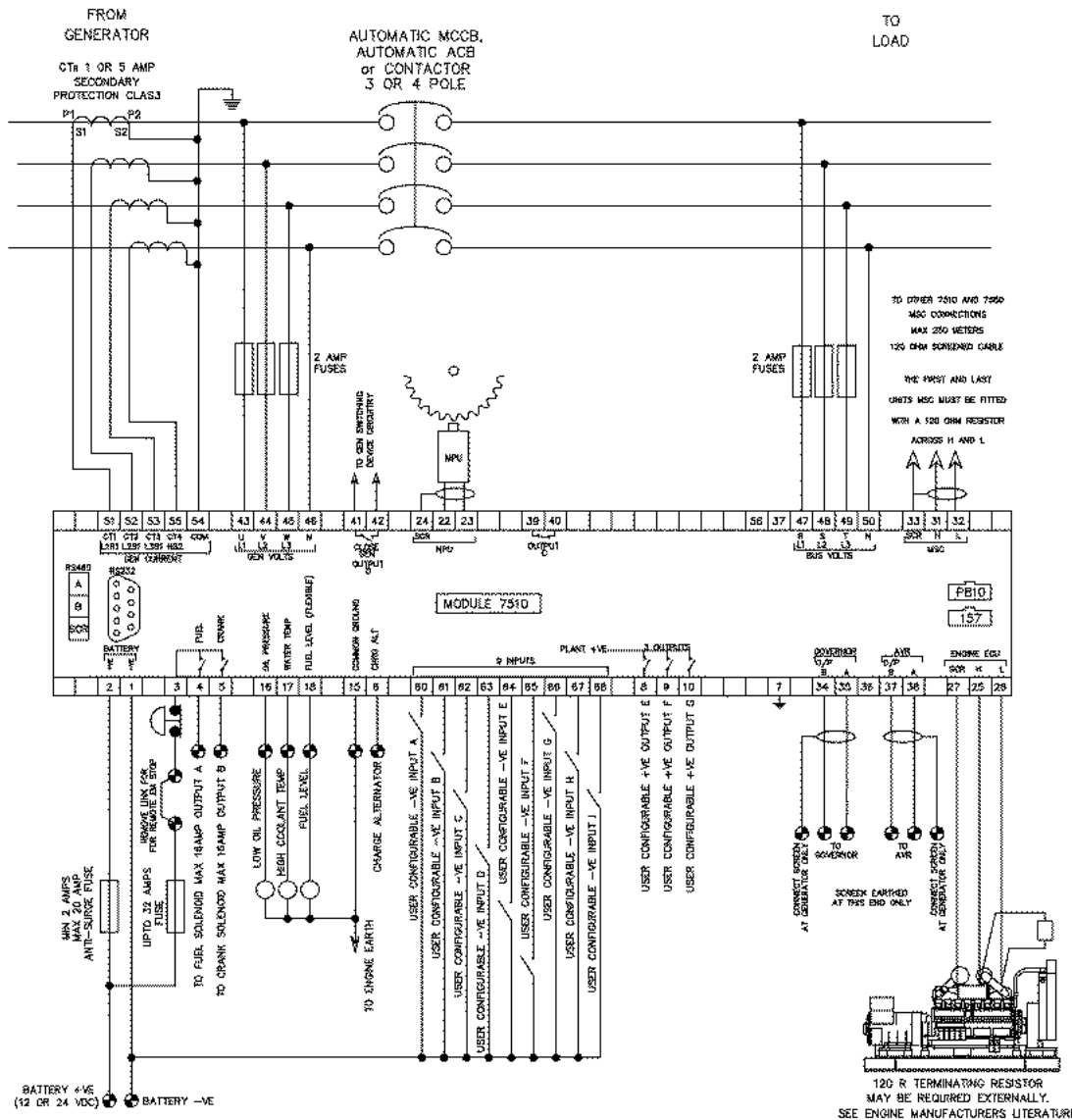




TYPICAL WIRING DIAGRAM



ACCESSING THE FRONT PANEL CONFIGURATION EDITOR.

- Ensure the engine is at rest and the module is in STOP mode by pressing the Stop/Reset button.
- Press the Stop/Reset and Info buttons simultaneously.
- If a module security PIN has been set, the PIN number request is then shown :
- Press (up) or (down) to adjust it to the correct value.
- Press (right) when the first digit is correctly entered. The digit you have just entered will now show '#' for security.
- Repeat this process for the other digits of the PIN number. You can press (left) if you need to move back to adjust one of the previous digits.
- When is pressed after editing the final PIN digit, the PIN is checked for validity. If the number is not correct, you must re-enter the PIN.
- If the PIN has been successfully entered (or the module PIN has not been enabled), the editor is displayed :

EDITING A PARAMETER

- Enter the editor as described above.
- Press the left or right buttons to cycle to the section you wish to view/change.
- To edit the parameter, press to enter edit mode. The parameter begins to flash to indicate that you are editing the value.
- Press the up or down buttons to change the parameter to the required value.
- Press to save the value. The parameter ceases flashing to indicate that it has been saved.
- To exit the editor at any time, press and hold the button.

<p>Deep Sea Electronics Plc. Tel: +44 (0) 1723 890099 Fax: +44 (0) 1723 893303 LO CALL (from UK BT landlines) : Telephone 0845 260 8933 Email: support@deepseapl.com Web: www.deepseapl.com</p>	<p>Deep Sea Electronics inc. Phone: +1 (815) 316-8706 Fax: +1 (815) 316-8708 TOLL FREE (USA only) : Tel: 1 866 636 9703 Email: dsales@deepseausa.com Web: www.deepseausa.com</p>	<p>Deep Sea Electronics Plc. (Far East) Tel: +66 (0) 2191 8052 Fax: +66 (0) 81805 5625 Email: support@deepseapl.com Web: www.deepseapl.com</p>
--	---	---

▲ NOTE: When the editor is visible, it is automatically exited after 5 minutes of inactivity to ensure security.

▲ NOTE: The PIN number is automatically reset when the editor is exited (manually or automatically) to ensure security.

▲ NOTE: More comprehensive module configuration is possible using the 75xx series PC configuration software. Please contact us for further details

▲ NOTE: The contents of the tables overleaf may differ depending on the actual module configuration.

